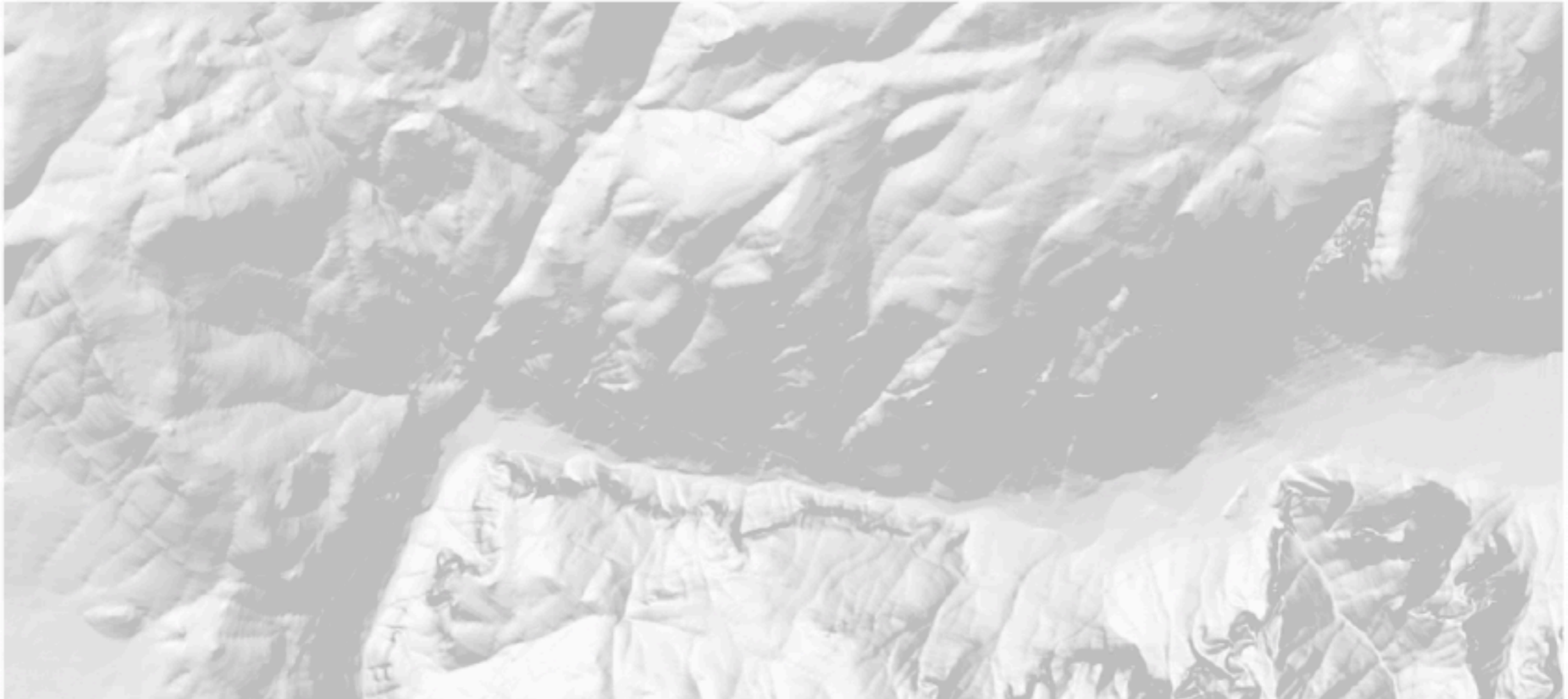


Raster Shaded Relief

+ National Map Geographic Names



Rendering Raster Data

- Raster data is `tiled` and compressed with WebP
- WebP compress about 3 times smaller when compared to PNG
- <https://developers.google.com/speed/webp>
- Tiling is performed with the GDAL suite of tools from OSGEO, `gdal2tiles.py`